



全德视讯TR系列,此款产品可以拼直屏,弧形屏,500\*500mm箱体和500\*1000mm箱体互相拼。也有前后维护,也可以做硬链接。完美的符合租赁市场。室内可以做点间距p2.604/p2.976/p3.91/p4.81 户外可以做点间距 P2.976/P3.91/P4.81MM。

Tentech TR Series, this type can do normal screen, curved screen, 500\*500mm and 500\*1000mm can put together. It can do front and back service, can be hard connect. Perfectly fit the rental market well. Indoor pixel: p2.604/p2.976/p3.91/p4.81 Outdoor pixel: P2.976/P3.91/P4.81MM



### 户内租赁 outdoor Rental

项目Item	属性:Feature	参数Spec	参数Spec	参数Spec	参数Spec
模组参数 module configuration	产品型号: Model Number	2.604-32S	2.976-28S	3.91-16S	4.81-13S
	模组尺寸: module size	250*250mm	250*250mm	250*250mm	250*250mm
	物理密度: Pixel density	147456dots	112896dots	65536dots	43264dots
	点间距: Pixel	2.604mm	2.976mm	3.91mm	4.81mm
	LED封装: SMD	SMD2020	SMD2020	SMD2020	SMD2020
	模组分辨率: pixel resolution	96*96dot	84*84dot	64*64dot	52*52dot
	模组厚度: module thickness	16mm	16mm	16mm	16mm
	模组重量: module weight	0.45kg	0.43kg	0.44kg	0.45kg
	驱动方式: Drive type	Constant drive恒流	Constant drive恒流	Constant drive恒流	Constant drive恒流
亮度: brightness	≥850cd/m2	≥850cd/m2	≥850cd/m2	≥850cd/m2	
箱体 Cabinet	箱体尺寸: cabinet size	500*500mm/500*1000mm	500*500mm/500*1000mm	500*500mm/500*1000mm	500*500mm/500*1000mm
	供电方式: power supply	5v/40a 5v 60a	5v/40a 5v 60a	5v/40a 5v 60a	5v/40a 5v 60a
	最佳视距: Best viewing distance	2.5-40m	3-40m	4-50m	5-50m
	最佳视角: Best viewing angle	140(w) / 140(H)	140(w) / 140(H)	140(w) / 140(H)	140(w) / 140(H)
	工作温度: Temperature	-20 / +60	-20 / +60	-20 / +60	-20 / +60
供电 power supply	湿度: Humidity	10%-75%	10%-75%	10%-75%	10%-75%
	工作电压: working voltage	AC220v+-10%	AC220v+-10%	AC220v+-10%	AC220v+-10%
	平均功耗: Average power consumption	≤300w/m2	≤300w/m2	≤300w/m2	≤300w/m2
控制系统 control system	最大功耗: Max power consumption	≤600w/m2	≤600w/m2	≤600w/m2	≤600w/m2
	控制方式: control method	同步synchronization	同步synchronization	同步synchronization	同步synchronization
技术参数: Parameter	刷新: Refresh	≥1920	≥1920	≥1920	≥1920
	频率: Frequency	60HZ	60HZ	60HZ	60HZ
	灰度级别: Gray level	65536	65536	65536	65536

### 户外租赁 outdoor Rental

项目Item	属性:Feature	参数Spec	参数Spec	参数Spec	参数Spec
模组参数 module configuration	产品型号: Model Number	2.604-32S	2.976-28S	3.91-16S	4.81-13S
	模组尺寸: module size	250*250mm	250*250mm	250*250mm	250*250mm
	物理密度: Pixel density	147456dots	112896dots	65536dots	43264dots
	点间距: Pixel	2.604mm	2.976mm	3.91mm	4.81mm
	LED封装 SMD	SMD1415	SMD1921	SMD1921	SMD1921
	模组分辨率: pixel resolution	96*96dot	84*84dot	64*64dot	52*52dot
	模组厚度: module thickness	16mm	16mm	16mm	16mm
	模组重量: module weight	0.55kg	0.6kg	0.6kg	0.6kg
	驱动方式: Drive type	Constant drive恒流	Constant drive恒流	Constant drive恒流	Constant drive恒流
亮度: brightness	≥4500cd/m2	≥5000cd/m2	≥5000cd/m2	≥5000cd/m2	
箱体 Cabinet	箱体尺寸: cabinet size	500*500mm/500*1000mm	500*500mm/500*1000mm	500*500mm/500*1000mm	500*500mm/500*1000mm
	供电方式: power supply	5v/40a 5v 60a	5v/40a 5v 60a	5v/40a 5v 60a	5v/40a 5v 60a
	最佳视距: Best viewing distance	2.5-40m	3-40m	4-50m	5-50m
	最佳视角: Best viewing angle	140(w) / 140(H)	140(w) / 140(H)	140(w) / 140(H)	140(w) / 140(H)
	工作温度: Temperature	-20 / +60	-20 / +60	-20 / +60	-20 / +60
供电 power supply	湿度: Humidity	10%-75%	10%-75%	10%-75%	10%-75%
	工作电压: working voltage	AC220v+-10%	AC220v+-10%	AC220v+-10%	AC220v+-10%
	平均功耗: Average power consumption	≤300w/m2	≤300w/m2	≤300w/m2	≤300w/m2
控制系统 control system	最大功耗: Max power consumption	≤800w/m2	≤800w/m2	≤800w/m2	≤800w/m2
	控制方式: control method	同步synchronization	同步synchronization	同步synchronization	同步synchronization
技术参数: Parameter	刷新: Refresh	≥1920	≥1920	≥1920	≥1920
	频率: Frequency	60HZ	60HZ	60HZ	60HZ
	灰度级别: Gray level	65536	65536	65536	65536



全德视讯TR 系列,此款产品可以拼直屏,弧形屏,500\*500mm箱体和500\*1000mm箱体互相拼。也有前后维护,也可以做硬链接。完美的符合租赁市场。室内可以做点间距p2.604/p2.976/p3.91/p4.81 户外可以做点间距 P2.976/P3.91/P4.81MM。

Tentech TR Series, this type can do normal screen, curved screen, 500\*500mm and 500\*1000mm can put together. It can do front and back service, can be hard connect. Perfectly fit the rental market well. Indoor pixel: p2.604/p2.976/p3.91/p4.81 Outdoor pixel: P2.976/P3.91/P4.81MM



### 户内租赁 outdoor Rental

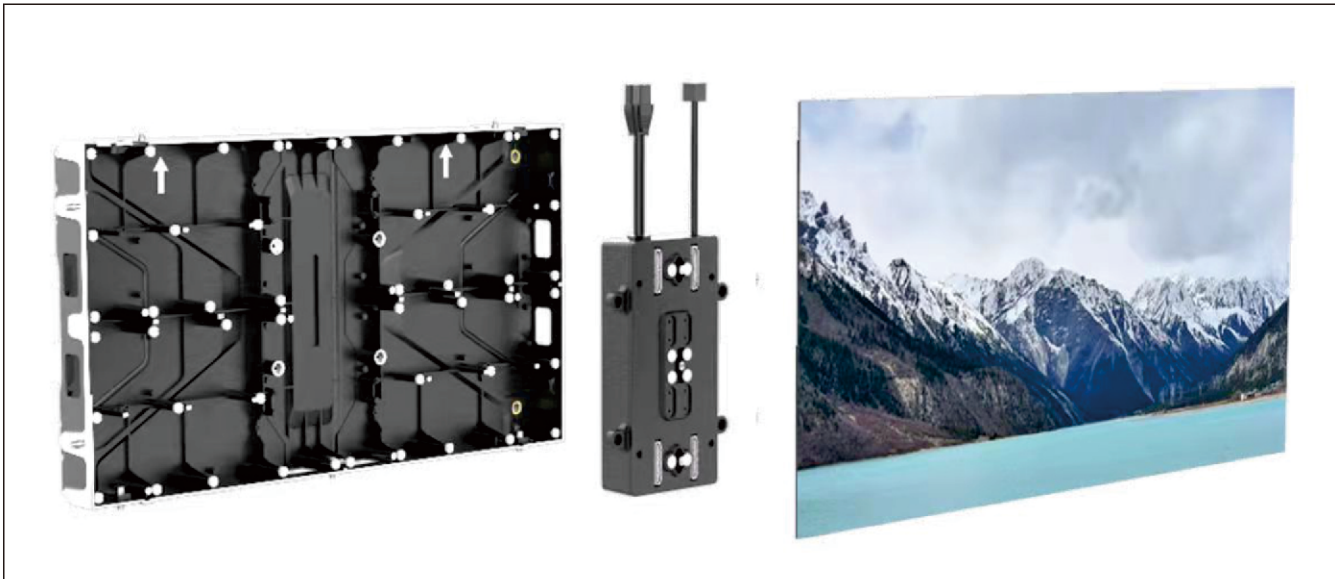
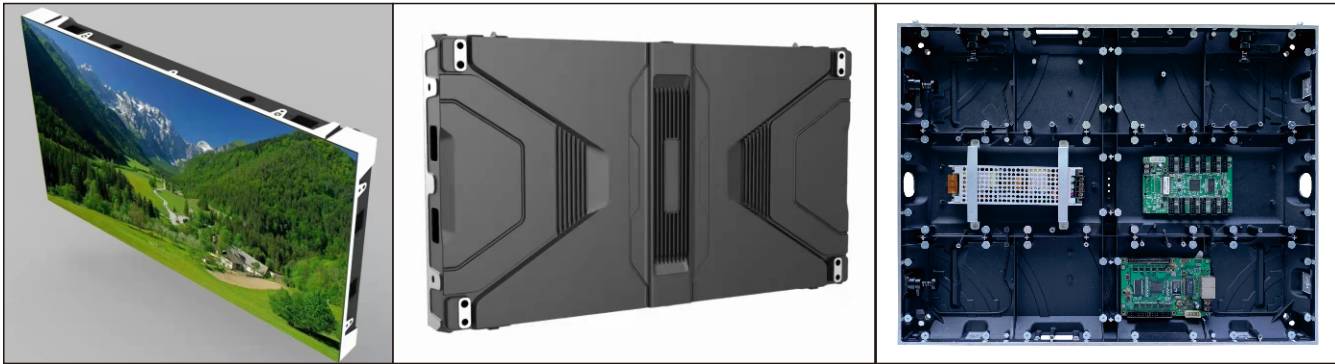
项目Item	属性:Feature	参数Spec	参数Spec	参数Spec	参数Spec
模组参数 module configuration	产品型号: Model Number	2.604-32S	2.976-28S	3.91-16S	4.81-13S
	模组尺寸: module size	250*250mm	250*250mm	250*250mm	250*250mm
	物理密度: Pixel density	147456dots	112896dots	65536dots	43264dots
	点间距: Pixel	2.604mm	2.976mm	3.91mm	4.81mm
	LED封装: SMD	SMD2020	SMD2020	SMD2020	SMD2020
	模组分辨率: pixel resolution	96*96dot	84*84dot	64*64dot	52*52dot
	模组厚度: module thickness	16mm	16mm	16mm	16mm
	模组重量: module weight	0.45kg	0.43kg	0.44kg	0.45kg
	驱动方式: Drive type	Constant drive恒流	Constant drive恒流	Constant drive恒流	Constant drive恒流
亮度: brightness	≥850cd/m2	≥850cd/m2	≥850cd/m2	≥850cd/m2	
箱体 Cabinet	箱体尺寸: cabinet size	500*500mm/500*1000mm	500*500mm/500*1000mm	500*500mm/500*1000mm	500*500mm/500*1000mm
	供电方式: power supply	5v/40a 5v 60a	5v/40a 5v 60a	5v/40a 5v 60a	5v/40a 5v 60a
	最佳视距: Best viewing distance	2.5-40m	3-40m	4-50m	5-50m
	最佳视角: Best viewing angle	140(w) / 140(H)	140(w) / 140(H)	140(w) / 140(H)	140(w) / 140(H)
	工作温度: Temperature	-20 / +60	-20 / +60	-20 / +60	-20 / +60
供电 power supply	湿度: Humidity	10%-75%	10%-75%	10%-75%	10%-75%
	工作电压: working voltage	AC220v+-10%	AC220v+-10%	AC220v+-10%	AC220v+-10%
	平均功耗: Average power consumption	≤300w/m2	≤300w/m2	≤300w/m2	≤300w/m2
控制系统 control system	最大功耗: Max power consumption	≤600w/m2	≤600w/m2	≤600w/m2	≤600w/m2
	控制方式: control method	同步synchronization	同步synchronization	同步synchronization	同步synchronization
技术参数: Parameter	刷新: Refresh	≥1920	≥1920	≥1920	≥1920
	频率: Frequency	60HZ	60HZ	60HZ	60HZ
	灰度级别: Gray level	65536	65536	65536	65536

### 户外租赁 outdoor Rental

项目Item	属性:Feature	参数Spec	参数Spec	参数Spec	参数Spec
模组参数 module configuration	产品型号: Model Number	2.604-32S	2.976-28S	3.91-16S	4.81-13S
	模组尺寸: module size	250*250mm	250*250mm	250*250mm	250*250mm
	物理密度: Pixel density	147456dots	112896dots	65536dots	43264dots
	点间距: Pixel	2.604mm	2.976mm	3.91mm	4.81mm
	LED封装 SMD	SMD1415	SMD1921	SMD1921	SMD1921
	模组分辨率: pixel resolution	96*96dot	84*84dot	64*64dot	52*52dot
	模组厚度: module thickness	16mm	16mm	16mm	16mm
	模组重量: module weight	0.55kg	0.6kg	0.6kg	0.6kg
	驱动方式: Drive type	Constant drive恒流	Constant drive恒流	Constant drive恒流	Constant drive恒流
箱体 Cabinet	亮度: brightness	≥4500cd/m2	≥5000cd/m2	≥5000cd/m2	≥5000cd/m2
	箱体尺寸: cabinet size	500*500mm/500*1000mm	500*500mm/500*1000mm	500*500mm/500*1000mm	500*500mm/500*1000mm
	供电方式: power supply	5v/40a 5v 60a	5v/40a 5v 60a	5v/40a 5v 60a	5v/40a 5v 60a
	最佳视距: Best viewing distance	2.5-40m	3-40m	4-50m	5-50m
	最佳视角: Best viewing angle	140(w) / 140(H)	140(w) / 140(H)	140(w) / 140(H)	140(w) / 140(H)
供电 power supply	工作温度: Temperature	-20 / +60	-20 / +60	-20 / +60	-20 / +60
	湿度: Humidity	10%-75%	10%-75%	10%-75%	10%-75%
	工作电压: working voltage	AC220v+-10%	AC220v+-10%	AC220v+-10%	AC220v+-10%
控制系统 control system	平均功耗: Average power consumption	≤300w/m2	≤300w/m2	≤300w/m2	≤300w/m2
	最大功耗: Max power consumption	≤800w/m2	≤800w/m2	≤800w/m2	≤800w/m2
技术参数: Parameter	控制方式: control method	同步synchronization	同步synchronization	同步synchronization	同步synchronization
	刷新: Refresh	≥1920	≥1920	≥1920	≥1920
	频率: Frequency	60HZ	60HZ	60HZ	60HZ
技术参数: Parameter	灰度级别: Gray level	65536	65536	65536	65536

全德视讯TFS系列,此款产品采用软连接前维护,适用于室内固定安装,政府、学校、交通局等会议厅,高清显示。箱体640\*480mm 可以做点间距:p1.25/p1.53/p1.86/p2/p2.5/p3.076mm

Tentech TD Series , this product is mainly used for outdoor fixed installation. The product adopts die-casting magnesium cabinet, which has high precision, easy installation, and saves time and freight. Perfectly fit the room fixed market. Out door can do dot pitch p3.076/p4/p5/p6.67/p8/p10



产品:Product	P1.538	P1.25	P1.667	P1.839	P2	P2.5	P3.076
点间距:Pixel Pitch	1.538	1.25	1.667	1.839	2	2.5	3.076
灯珠型号:LED Type	SMD 1212	SMD 1010	SMD 1212	SMD 1515		SMD 2121	
模组尺寸:Module Size	320x160x16.5	320*160*14					
模组重量:Module weight	0.48kg/pcs						
分辨率:Resolution	208*104	256*128	192*96	174*87	160*80	128*64	104*52
亮度:Brightness	500Nits				600Nits		
扫描:Scaning	52s	64s	64s	58s	40s	32s	26s
刷新:Refresh Rate	23840Hz						
箱体尺寸:Cabinet Size	640m*480mm*52mm						
箱体重量:Cabinet Weight	7.8kg/pane						
维护方式:Cabinet Maintenance	100%Front Service						
箱体材料:Cabinet Material	Diecasting Aluminum						
防护等级:Protection Level	Ip30						
色温:Color Temperature	2000-9300k adjustable						
观看视角:Viewing Angle	H140°/H140°		H160°/H140°				
电压要求:Power Requirement	AC 92~132V/AC 186~264V, Frequency 47~63(Hz)						
换帧频率:Frame Changefrequency	50Hz&60Hz						
灰度等级:Graylevel	16384						
工作温度:Workingtemperature	-20°C~50°C						
工作湿度:Working humidity	10%~65%RH						
证书:applied code	EMC/CE/ROHS/CCC/FCC/ISO						



小间距系列  
Fine pixel



点间距:Pixel Pitch	0.93mm	1.25mm	1.56mm	1.875mm
亮度: Brightness Level	500~900nits	500~900nits	500~900nits	500~900nits
刷新: Refresh Rate	≥3,840Hz	≥3,840Hz	3,840Hz	≥3,840Hz
观看视角: Viewing Angle	160°/160°	160°/160°	160°/160°	160°/160°
物理密度: Physical Density	1, 156, 200 pixels/m <sup>2</sup>	640, 000 pixels/m <sup>2</sup>	410, 910 pixels/m <sup>2</sup>	284, 444 pixels/m <sup>2</sup>
模组尺寸: Module Dimension	150*168.75mm	150*168.75mm	150*168.75mm	150*168.75mm
箱体分辨率: Cabinet Resolution	645x 364 pixels	480x 270 pixels	384×346 pixels	320x 180 pixels
箱体宽度: Cabinet Width	600mm	600mm	600mm	600mm
箱体高度: Cabinet Height	337.5mm	337.5mm	337.5mm	337.5mm
箱体厚度: Cabinet Depth	50mm	50mm	50mm	50mm
箱体重量: Cabinet Weight	7.5Kg	7.5kg	7.5kg	7.5kg
最大功耗: Max Power Consumption	650W/m <sup>2</sup>	650W/m <sup>2</sup>	650W/m <sup>2</sup>	650W/m <sup>2</sup>
平均功耗: Ave Power Consumption	220W/m <sup>2</sup>	220W/m <sup>2</sup>	220W/m <sup>2</sup>	220W/m <sup>2</sup>
工作电压: Voltage Range	AC100-240V(50-60Hz)	AC100-240V(50-60Hz)	AC100-240V(50-60Hz)	AC100-240V(50-60Hz)
工作温度: operating Temperature	-10°C~+45°C	-10°C~+45°C	-10°C~+45°C	-10°C~+45°C
使用寿命: Half Life	100, 000hrs	100, 000hrs	100, 000hrs	100, 000hrs
防护等级: Protection Rating	IP45	IP45	IP45	IP45

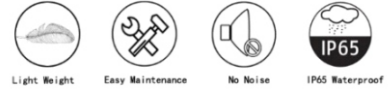






全德视讯TD系列,此款产品主要用于室外固定安装,产品采用压铸镁箱体,具有精度高,安装轻松,省时省运费等有点。完美的符合室固定市场。室外可以做点间距p3.076/p4/p5 /p6.67/p8/p10mm

Tentech TD Series , this product is mainly used for outdoor fixed installation. The product adopts die-casting magnesium cabinet, which has high precision, easy installation, and saves time and freight. Perfectly fit the room fixed market. Outdoor can do dot pitch p3.076/p4/p5/ p6.67/p8/p10



### 户外固定安装 Outdoor fixed install

项目Item	属性:Feature	参数Spec	参数Spec	参数Spec
模组参数 module configuration	产品型号: Model Number	3.076-13	4-10S	5-8S
	模组尺寸: module size	320*160mm	320*160mm	320*160mm
	物理密度: Pixel density	105625dots	62500dots	40000dots
	点间距: Pixel	3.076mm	4mm	5mm
	LED封装 SMD	SMD1415	SMD1921	SMD1921
	模组分辨率: pixel resolution	104*52dot	80*40dot	64*32dot
	模组厚度: module thickness	17mm	17mm	17mm
	模组重量: module weight	0.46kg	0.45kg	0.4kg
	驱动方式: Drive type	Constant drive恒流	Constant drive恒流	Constant drive恒流
	亮度: brightness	》5000cd/m2	》5500cd/m2	》5500cd/m2
箱体 Cabinet	箱体尺寸: cabinet size	960*960mm	960*960mm	960*960mm
	供电方式: power supply	5v/40a 5v 60a	5v/40a 5v 60a	5v/40a 5v 60a
	最佳视距: Best viewing distance	3-80m	4-80m	5-100m
	最佳视角: Best viewing angle	140(w) / 140(H)	140(w) / 140(H)	140(w) / 140(H)
	工作温度: Temperature	-20 / +60	-20 / +60	-20 / +60
	湿度: Humidity	10%-75%	10%-75%	10%-75%
供电 power supply	工作电压: working voltage	AC220v+-10%	AC220v+-10%	AC220v+-10%
	平均功耗: Average power consumption	<=300w/m2	<=300w/m2	<=300w/m2
	最大功耗: Max power consumption	<=800w/m2	<=800w/m2	<=800w/m2
控制系统 control system	控制方式: control method	同步synchronization	同步synchronization	同步synchronization
技术参数: Parameter	刷新: Refresh	>=1920	>=1920	>=1920
	频率: Frequency	60HZ	60HZ	60HZ
	灰度级别: Gray level	65536	65536	65536
项目Item	属性:Feature	参数Spec	参数Spec	参数Spec
模组参数 module configuration	产品型号: Model Number	6.67-6S	8-5s	10-4s/10-2s
	模组尺寸: module size	320*160mm	320*160mm	320*160mm
	物理密度: Pixel density	22477dots	15625dots	10000dots
	点间距: Pixel	6.67mm	8mm	10mm
	LED封装 SMD	SMD1921	SMD3535	SMD3535
	模组分辨率: pixel resolution	48*24dot	40*20dot	32*16dot
	模组厚度: module thickness	17mm	17mm	17mm
	模组重量: module weight	0.45kg	0.44kg	0.42kg
	驱动方式: Drive type	Constant drive恒流	Constant drive恒流	Constant drive恒流
	亮度: brightness	》5500cd/m2	》5500cd/m2	》5500cd/m2
箱体 Cabinet	箱体尺寸: cabinet size	960*960mm	960*960mm	960*960mm
	供电方式: power supply	5v/40a 5v 60a	5v/40a 5v 60a	5v/40a 5v 60a
	最佳视距: Best viewing distance	7-100m	8-100	10-100
	最佳视角: Best viewing angle	140(w) / 140(H)	140(w) / 140(H)	140(w) / 140(H)
	工作温度: Temperature	-20 / +60	-20 / +60	-20 / +60
	湿度: Humidity	10%-75%	10%-75%	10%-75%
供电 power supply	工作电压: working voltage	AC220v+-10%	AC220v+-10%	AC220v+-10%
	平均功耗: Average power consumption	<=300w/m2	<=300w/m2	<=300w/m2
	最大功耗: Max power consumption	<=800w/m2	<=800w/m2	<=800w/m2
控制系统 control system	控制方式: control method	同步synchronization	同步synchronization	同步synchronization
技术参数: Parameter	刷新: Refresh	>=1920	>=1920	>=1920
	频率: Frequency	60HZ	60HZ	60HZ
	灰度级别: Gray level	65536	65536	65536



全德视讯TD系列, 此款产品主要用于室外固定安装, 产品采用压铸镁箱体, 具有精度高, 安装轻松, 省时省运费等有点。完美的符合室内固定市场。室外可以做点间距p3.076/p4/p5 /p6.67/p8/p10mm

Tentech TD Series , this product is mainly used for outdoor fixed installation. The product adopts die-casting magnesium cabinet, which has high precision, easy installation, and saves time and freight. Perfectly fit the room fixed market. Outdoor can do dot pitch p3.076/p4/p5 /p6.67/p8/p10



固定安装系列  
Fixed Install

### 户外固定安装 Outdoor fixed install

项目Item	属性:Feature	参数Spec	参数Spec	参数Spec
模组参数 module configuration	产品型号: Model Number	3-16	4.8-10S	6-8S
	模组尺寸: module size	192*192mm	192*192mm	192*192mm
	物理密度: Pixel density	111111dots	43400dots	27777dots
	点间距: Pixel	3mm	4.8mm	6mm
	LED封装 SMD	SMD1921	SMD1921	SMD1921
	模组分辨率: pixel resolution	64*64dot	40*40dot	32*32dot
	模组厚度: module thickness	17mm	17mm	17mm
	模组重量: module weight	0.46kg	0.45kg	0.4kg
	驱动方式: Drive type	Constant drive恒流	Constant drive恒流	Constant drive恒流
	亮度: brightness	>>5000cd/m2	>>5000cd/m2	>>5000cd/m2
箱体 Cabinet	箱体尺寸: cabinet size	768*768mm/ 960*960mm	768*768mm/ 960*960mm	768*768mm/ 960*960mm
	供电方式: power supply	5v/40a 5v 60a	5v/40a 5v 60a	5v/40a 5v 60a
	最佳视距: Best viewing distance	3-80m	5-100m	6-100m
	最佳视角: Best viewing angle	140(w) / 140(H)	140(w) / 140(H)	140(w) / 140(H)
	工作温度: Temperature	-20 / +60	-20 / +60	-20 / +60
	湿度: Humidity	10%-75%	10%-75%	10%-75%
供电 power supply	工作电压: working voltage	AC220v+-10%	AC220v+-10%	AC220v+-10%
	平均功耗: Average power consumption	<=300w/m2	<=300w/m2	<=300w/m2
	最大功耗: Max power consumption	<=800w/m2	<=800w/m2	<=800w/m2
控制系统 control system	控制方式: control method	同步synchronization	同步synchronization	同步synchronization
技术参数: Parameter	刷新: Refresh	>=1920	>=1920	>=1920
	频率: Frequency	60HZ	60HZ	60HZ
	灰度级别: Gray level	65536	65536	65536



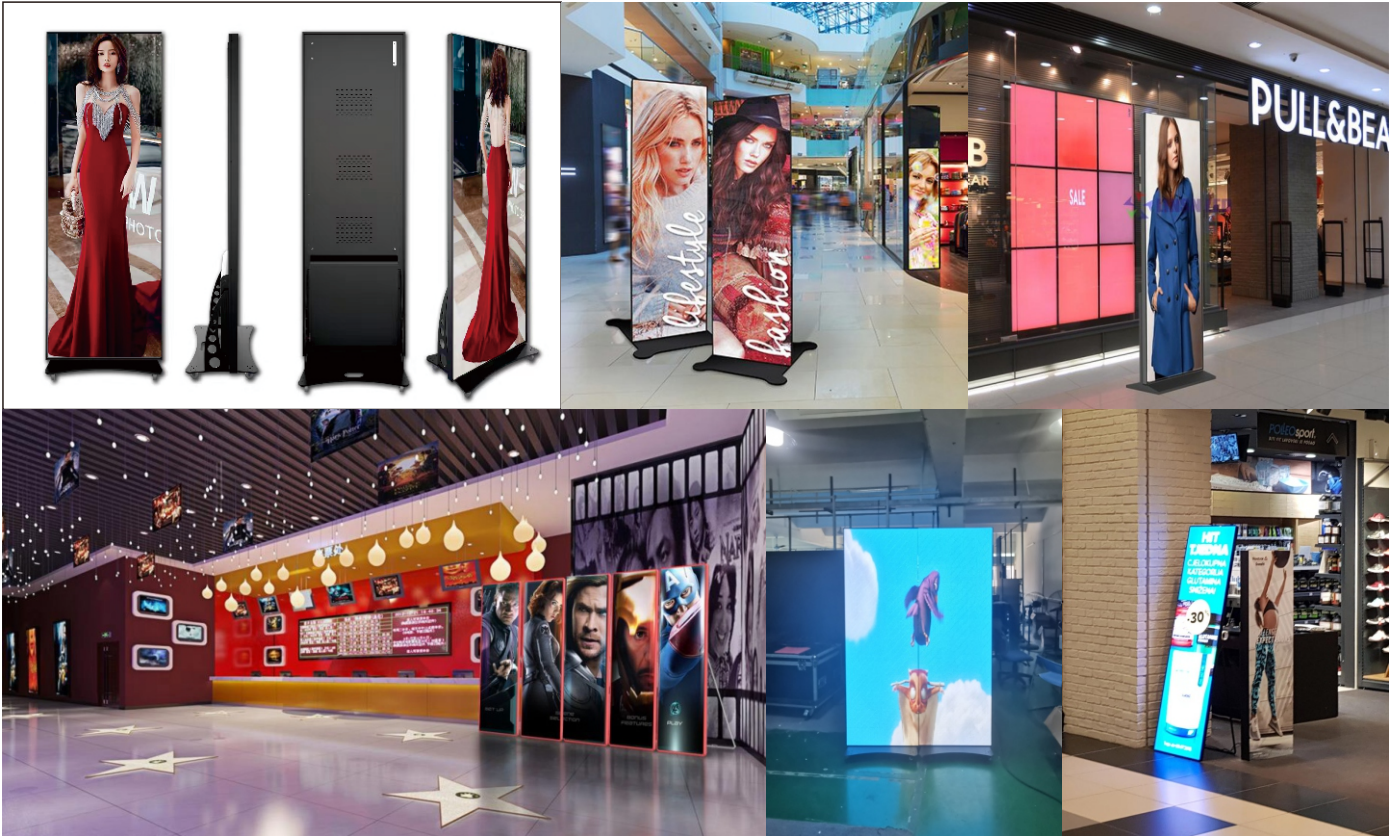


## TP 系列 TP-series

全德视讯TP系列,此款产品主要用于室内商场,电影院,酒店等场所,插电即可运行,带wifi,usb,3g,4g等功能。随时更换,视频,文字,图片等内容。可以做点间距:P1.538/P1.86/P2/P2.5/P3.076/P4/P5mm等

Tentech TP Series, This product is mainly used in indoor shopping malls, movie theaters, hotels and other places. It can be operated after plugging in, with wifi, usb, 3g, 4g and other functions and can be replaced at any time. Video, text, pictures and other content. Can do dot pitch: P1.538/P1.86/P2/P2.5/P3.076/P4/P5mm, etc.

项目:Item	P1.5	P1.8	P2	P2.5	P3
点间距:Pixel pitch	1.53mm	1.83mm	2mm	2.5mm	3mm
模组尺寸:module size	320*160mm	320*160mm	320*160mm	320*160mm	192*192mm
屏体像素:Display resolution	416*1248	348*1044	320*960	256*768	128*640
灯珠型号:LED encapsulation	SMD 1212	SMD 1515	SMD 1515	SMD 2121	SMD 2121
物理密度:Pixel density(pixel/screen)	519168	363312	307200	196608	98304
显示尺寸:Display size	640*1920mm				576*1920
箱体材质:Cabinet material	Sheetmetal, die-casting aluminum				
颜色:Frame color	Black(default)				
重量:Weight(kg/pcs)	40				
亮度:Brightness	2500cd adjustable				2700cdadjustable
扫描:Drive mode	1/52s can	1/58s can	1/40s can	1/32s can	1/32s can
观看视角:Optimum Viewing Angle	160°(V), 160(H)				
显示颜色:Display color	4400 billion				
灰度:Grayscale	16bit				
刷新率:Refresh frequency	1920Hz/3840Hz				
对比度:Contrast	3000:01:00				
工作电压:operating power	AC110V~240V、50~60Hz				
最大功耗:Input voltage(W/screen)	450	310	340	430	480
平均功耗:Average power(W/screen)	150	100	110	140	160
显示模式:Displaymode	Synchronous control、asynchronous control				
控制方式:Control mode	Wifi、Network				
支持视频文件:Support video files	MPEG/H.264				
工作温度:operating temperature	-10°C~+60°C				
使用寿命:Lifespan	100000 hours				

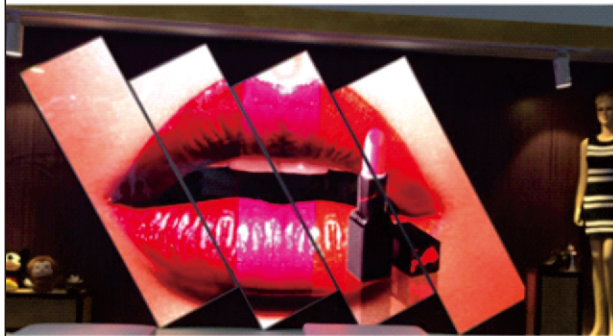




产品应用商场、酒店、会议指导、新品发布、4S店等

POPULAR APPLICATIONS

widely use to r shops, hotel wedding.meeting gul dance,  
new product pre scn to tion.cu



可以智能分屏,支持~清图片,视频,文字

SMART SPLIT SCREEN

Optional split screen mode, supporting HD picture or video split screen display mode.

无缝拼接可以单独播放,也可以多台拼接

TOTALLY SEAMLESS SPLICING

I can not an lys how alone butasospicngtogether



广告机系列  
Iposter




全德视讯TS系列,此款透明产品主要用于商场,珠宝店,酒吧,舞台,汽车4s店等场所,有不同亮度选择,适用于室内外,半室外等场所。可做点间距:P3.91-7.82mm,亮度可选,800cd/m<sup>2</sup>,1200cd/m<sup>2</sup> 4500cd/m<sup>2</sup>。

Tentech TS series, the transparent screen is mainly used in shopping malls, jewelry stores, bars, stages, car 4s shops and other places, with different brightness options, suitable for indoor, outdoor, semi-outdoor and other places. Can do dot pitch: P3.91-7.82mm, brightness optional, 800cd/m<sup>2</sup>, 1200cd/m<sup>2</sup> 4500cd/m<sup>2</sup>.

## P3.9-7.8透明LED显示屏规格书 Transparent screen spec

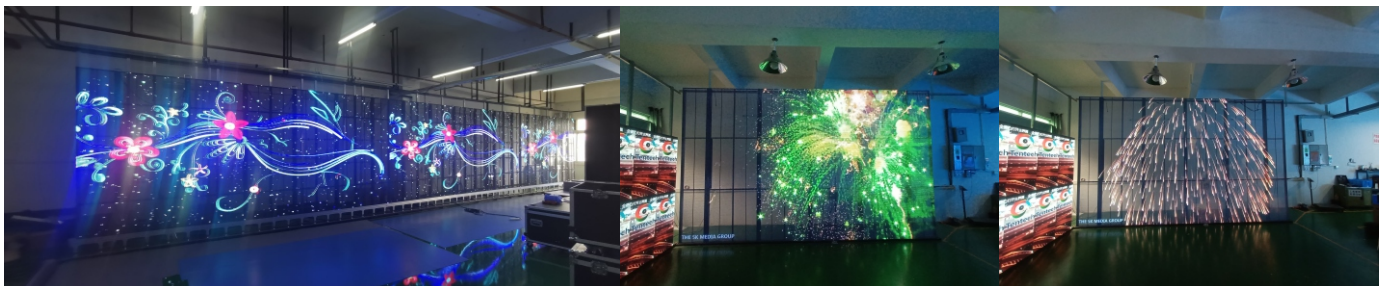
### 技术参数 Technical spec

#### LED参数 LED Parameter

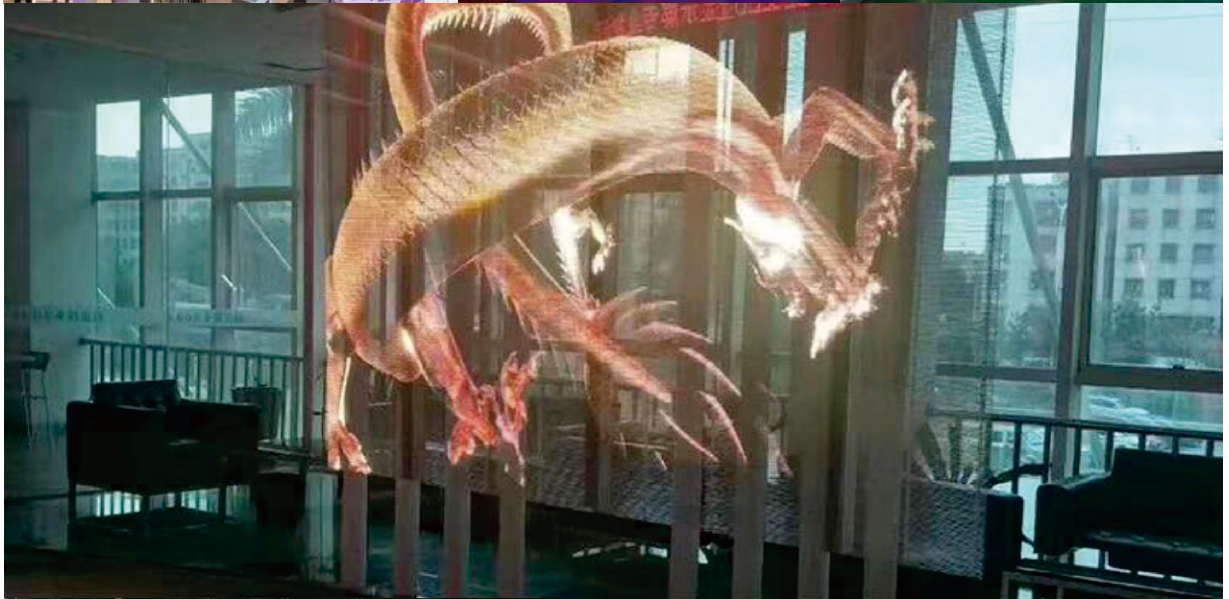
项目Itemr	亮度Brightness	视角(水平H/垂直V)visual angle	波长Wavelength	测试条件Test Condition	
	红LED	450~800mcd	120°±5°	618-625nm	25°C,20mA
	绿LED	750~1350 mcd	120°±5°	510-530nm	25°C,20mA
	蓝LED	130~220 mcd	120°±5°	460-475nm	25°C,20mA

#### LED芯片 LED Chip

LED构成 Constitute	类型 type
SMD	SMD1820(Anti-UV)
参数详情 Parameter	
点间距 pixel	3.9-7.8mm
驱动模式 SCAN	7S扫
模组分辨率Module resolution	126*16dots
模组像素Module pixel	2016dots
箱体尺寸(宽X高)cabinet size	1000*500mm/1000*1000mm
箱体分辨率cabinet resolution	252*64dots
透光率Transparency	≥75%
模组数量Mmodule quantity	8pcs/16cs
像素密度 pixel density	32768点/m <sup>2</sup>
材质Material	铝型材 Aluminium profile
箱体重量Cabinet weight	7KG/12KG
亮度Brightness	铜线灯珠copper lamp≥8500cd/m <sup>2</sup> 金线灯珠Golden lamp≥4500cd/m <sup>2</sup>
视角Visual angle	H水平140°,垂直V140°
最小观看距离 view distance	≥3m
灰度级数GREY GRAD	16bit
刷新率refresh rate	≥1920HZ
换帧频率repetition frequency	60fps
输入电压Input voltage	AC 86-264V/60Hz
功耗(最大/平均)sonsumption	800/240W/m <sup>2</sup>
屏体重量 Screen weight	9kg/m <sup>2</sup>
平均无故障时间MTTF	>10,000 H小时
使用寿命service life	≥100,000 H小时
IP防护等级IP level	IP30
温度TEMP	-20°C~+60°C or -40°C~+60°C
湿度HUMIDITY	10%-85%RH
操作系统Control system	诺瓦NOVA







透明屏系列  
Transparent screen